

Water Hose Reel

Stainless Steel Reel for Kitchen/Restaurant

Built-out Spring TWA-STS Type



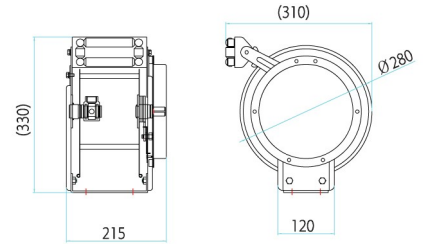
For cold water



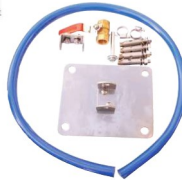
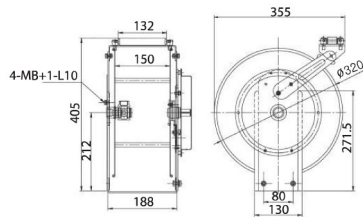
For Hot water



For Steam



Accessories for grounding type hose reel (bolts x nuts 4EA, Inlet hose 1.5m)



Cleaning reel for fried food

Hot water hose reel for 100°C

This product is for cleaning by approx. 100°C high temperature.

It is mainly used on the space which is not be washed by high temperature water. (Such as glued residue by oil.)

The hose material is consisted by rubber. So it is impossible for using by drinking water.

Accessories for hot water hose reel (for 100°C)

(Hanger bracket, anchor bolt.

Nut*4EA, Connecting pin, Hose clamp*2EA, Inlet hose 1.5m)

Features of hot water hose reel

This reel is used by franchise and restaurants for using cold, hot water, steam

The mounting space is mainly on the ground.

And depending on usage, the production size can be customized (by small type).

Model	Hose			W.P (BAR)	Weight(kg)	Usage	Desc.
	Material	I.D-O.D(Ø)	L (M)				
TWA-1308H	NBR,SBR	13	8	20	12		
TWA-1310H	NBR,SBR	13	10	20	16	Drinking	For hot water
TWA-1312H	NBR,SBR	13	12	20	20	Cleaning	less than 100°C
TWA-1315H	NBR,SBR	13	15	20	24		
STWA-1315	PVC	13	8	10	15	Drinking, Cleaning	For cold water
STWA-1315W	PVC	13	10	10	18	Drinking, Cleaning	For hot water
STWA-908H	NBR,SBR	9	8	20	12	Cleaning	For hot water
STWA-1315H	NBR,SBR	13	15	20	24	less than 100°C	less than 100°C
STWA-1315SH	EPDM	13	15	10	20	Drinking, Cleaning, disinfection	For steam

We do not manufacture the spring built-in type hose reel which is for hot water and steam.